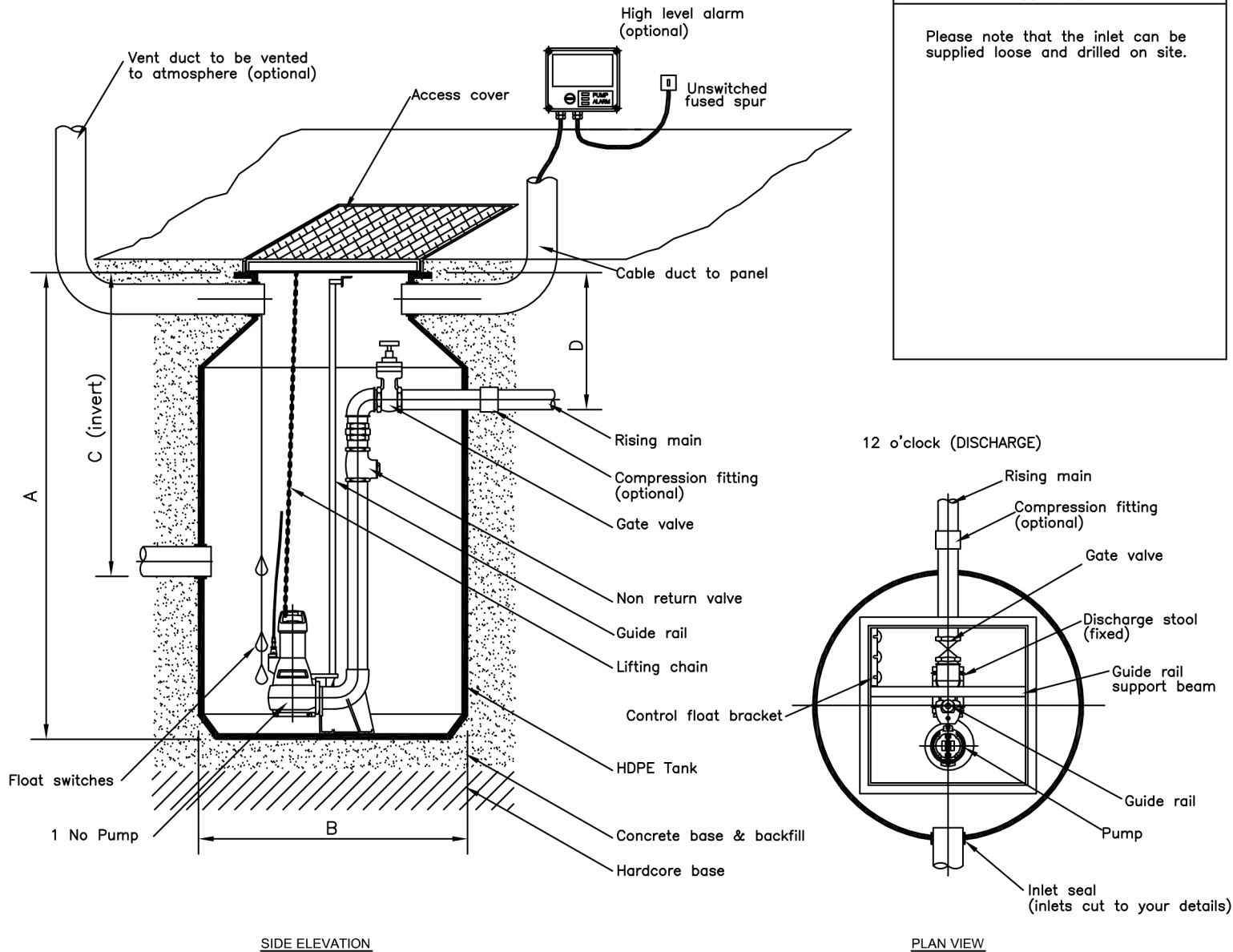
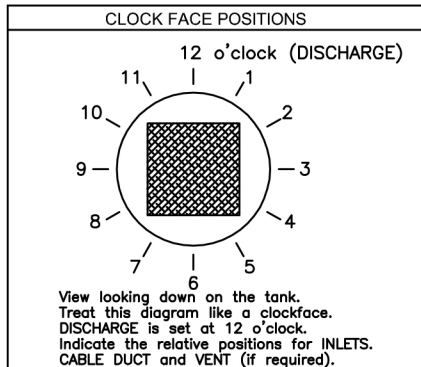




ACCESS COVER (CLEAR OPENINGS)		
LENGTH (mm)	WIDTH (mm)	TYPE
750	600	5 TONNE

FABRICATION SPECIFICATIONS				
ITEM	INDEX	DEPTH (mm)	DIAMETER (mm)	CLOCK FACE POSITION
Tank depth	A	1000		
Tank ϕ	B		1000	
Inlet	C1		110	
Inlet	C2			
Inlet	C3			
Inlet	C4			
Discharge	D	500	63/90	12
Cable duct			110	
Vent				



Comments

Please note that the inlet can be supplied loose and drilled on site.

PLEASE NOTE THAT THIS DOCUMENT MUST BE READ IN CONJUNCTION WITH THE INSTALLATION & OPERATING GUIDELINES.

DRAWING NOT TO SCALE

Customer.		
Project.	Drawing No.	
Project address.	Date.	
	Drawn by.	Checked by.



Sumps & Pumps Direct Ltd, Cinnamon House,
88 Cinnamon Lane, Fearnhead,
Cheshire, WA2 0AW,